

Music Visualization

Brief instructions for the use of the programme

Version 0.4b

Copyright © 2006

Documentation: Ing. Jaroslav Nušl

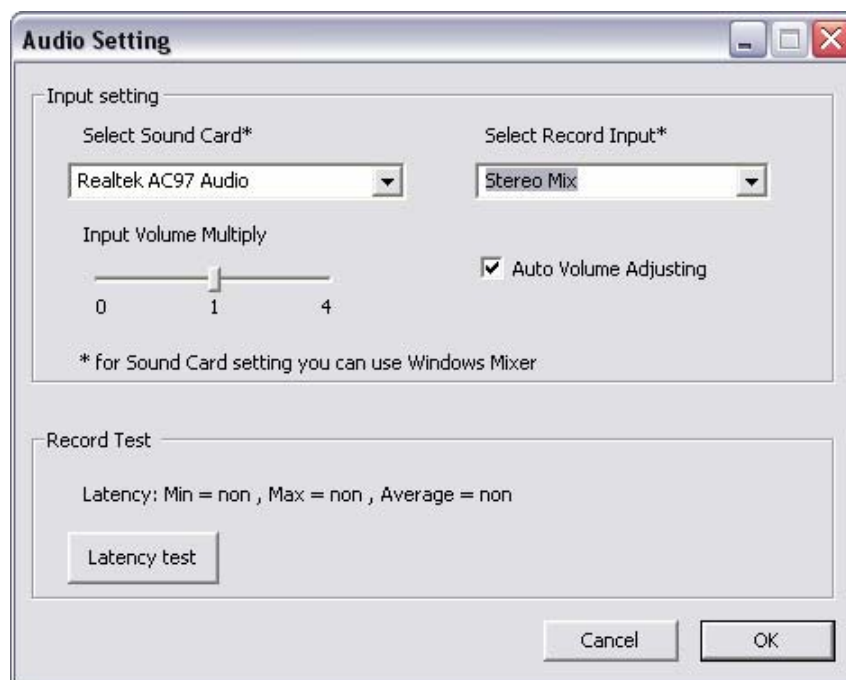
Web: www.svetla.org

Contents

1. Sound card setup	3
2. Adding of a effect (symptom)	5
3. Setting of the Effect (symptom).....	6

1. Sound card setup

When switched on, it is necessary to set up the sound card. The dialog box for setting can be found in the upper menu of the main Music Visualisation box – item: **Configuration\Audio Setting**.



It is possible to choose any sound card for the music analysis (item Select Sound Card) and the input, from which the analysis is done (item Select Record Input). The most important items that can be used for input are:

Microphone

- analysis is done using connected microphone

Input from external source (Line In)

- analysis can be done from the input line of the sound card

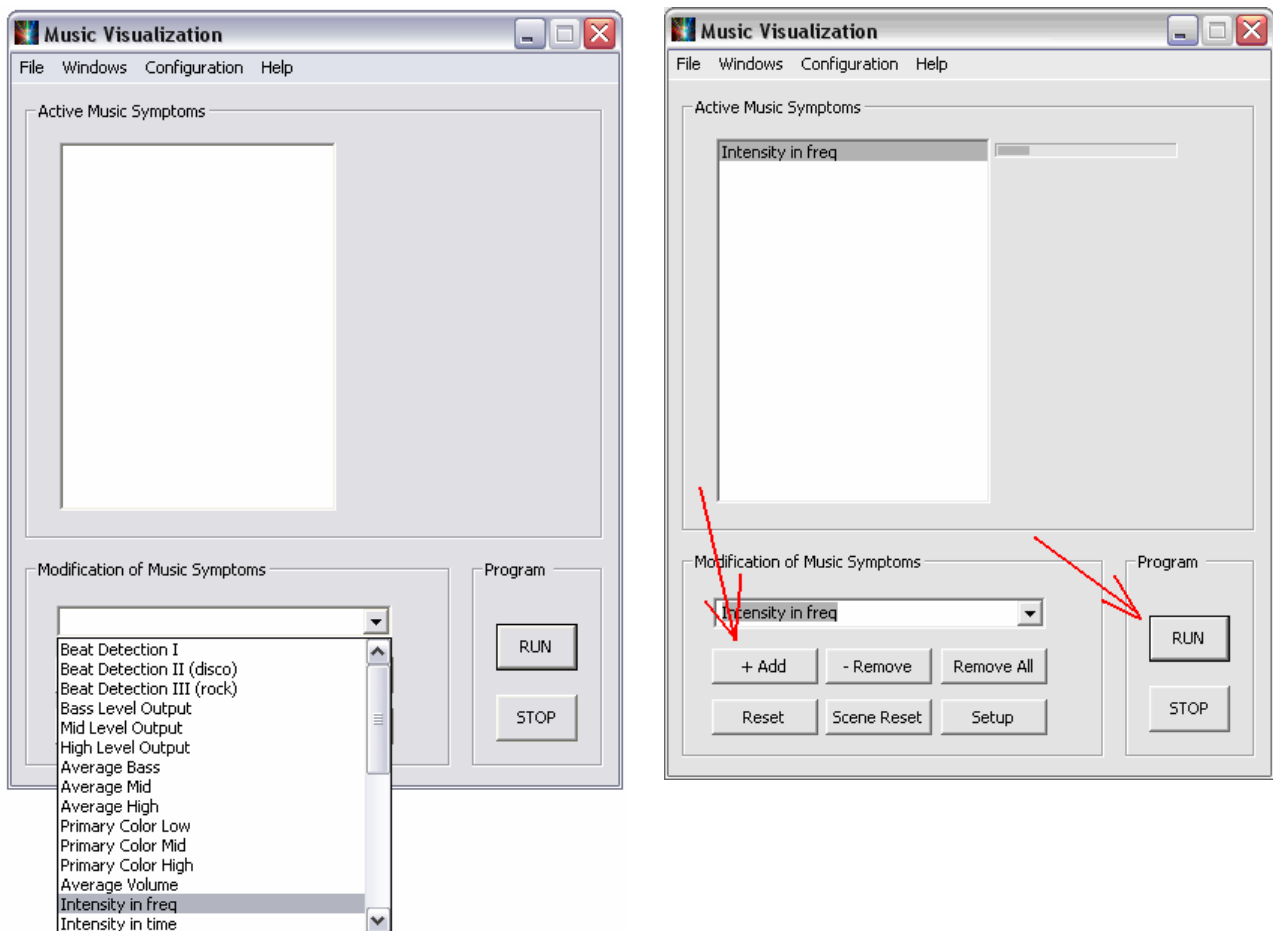
Stereo Mix, Mono Mix, Wave

- the programme analyses the music, which is played by any programme on the PC.

The inputs can be set also in Volume control, which is a standard component of Windows in menu "Audio record". There it is also possible to set the concrete volume for the record (in this case for the analysis).

2. Adding of a effect (symptom)

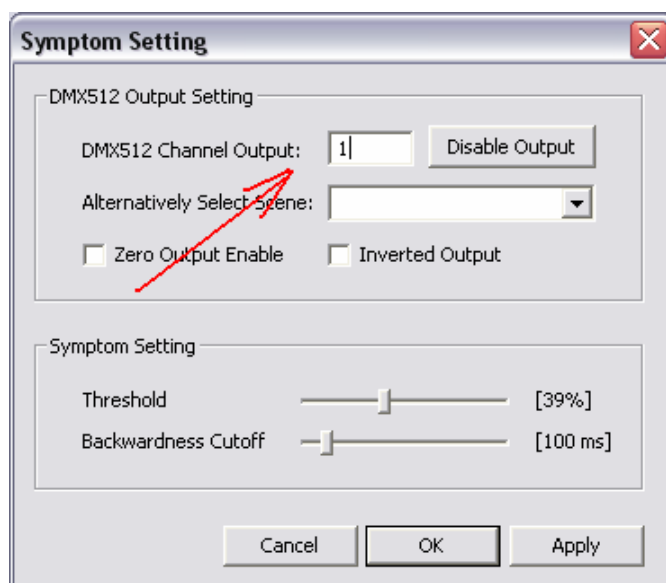
In the lower part of the main window, there is a choice of music symptoms, which then control the connected light technology/hardware. For trial, you can at first choose the symptom, which shows the level of overall volume – e.g. Intensity in freq.



It can be added to the list of active symptoms (effects) by clicking on + Add. After running the programme by the “Run” button, the actual volume will begin to show. With this volume you can for example influence the light intensity of the bulb or the motion of the scanner mirror.

3. Setting of the Effect (symptom)

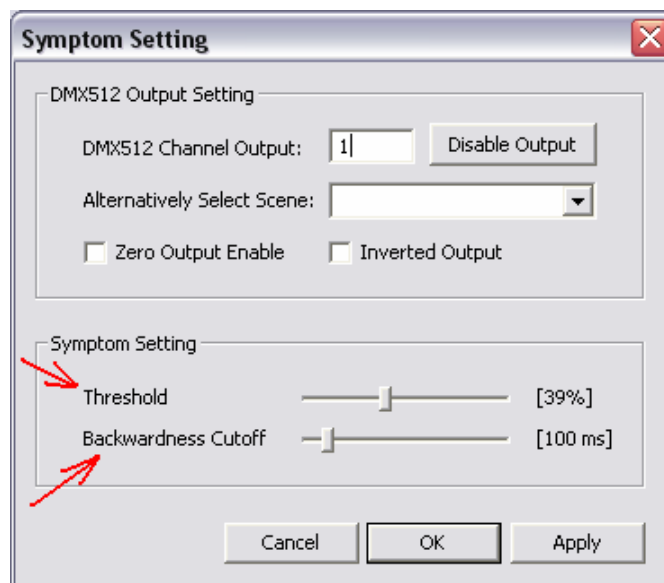
By clicking on the symptom's name in the list or by pressing the Setup button, the dialog box for Symptom Setting displays.



In DMX512 Channel Output item, you can set any channel (in range 0 to 511), which is to influence the given symptom (effect). Output on the DMX 512 line (from USB-DMX512 Interface) is displayed in the DMX output box (therefore only first 48 channels).



Not only one channel but a whole scene or chase (sequence of scenes) can be added to a symptom. Scenes can be set in the Scene Setting dialog box, which can be activated by choosing item Windows\Scene Setting in the main Music Visualization window. Saved scenes have ending .sc and chase has .ch. These files then appear in the Symptom Setting dialog box in item Alternatively Select Scene.



The symptom can be set using scroll bar. The first one called **Threshold** sets the sensitivity threshold – the function is dependent on a concrete symptom. Either:

- a) the output is zero when some output value is lower than the threshold
- e.g. by Beat Detection, Silent Detection, Move Volume Speed, primary Color
- b) or it sets the output sensitivity (it multiplies the output value)
- e.g. by Bass Level Output, Mid Level Output, High Level Output, Intensity in freq, Intensity in Time, Average Bass, Average Mid, Average

Bass, Average Mid, Average High, Submaster

The second **Backwardness Cutoff** scroll bar sets according to the type of the symptom:

a) the delay, by which the output is deactivated (it does not delay the output activation)

- e.g. by Beat Detection, Strobo Enabler, Bass Level Output, Mid Level output, High Level Output

b) or the speed

- e.g. by Move Volume Speed, Test